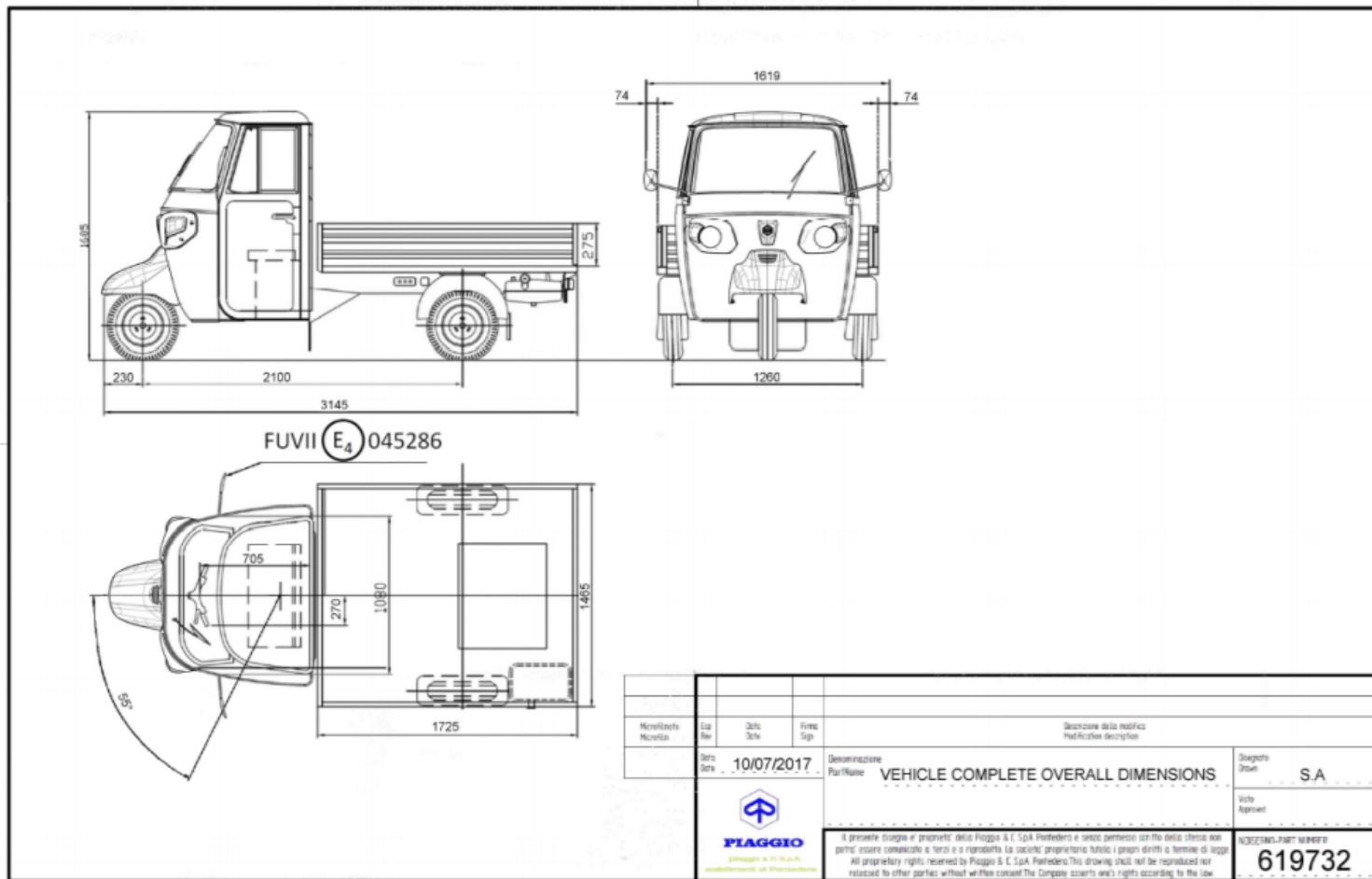


# Technical Information Ape Classic



	DECK	VAN
ENGINE	435 cc monocylinder 4 strokes diesel, 2 valves direct fuel injection, forced air cooling system	
BORE X STROKE	86 mm x 75 mm	
MAX POWER	6,20 Kw @ 3.600 rpm	
MAX TORQUE	22 Nm @ 2.150 rpm	
GEARBOX	n°4 forward speeds + reverse	
BRAKES	Pedal operated, dual circuit; front and rear drum	
TYRES	4.50 - 10 8PR	
DIMENSIONS	length 3.145 mm, width 1.465 mm, height 1.700 mm	length 3.165 mm, width 1.495 mm, height 1.700 mm
WHEELBASE	2.100 mm	
TRACK (rear)	1.260 mm	
PAYLOAD DIMENSIONS	1.660 mm x 1.400 mm (internal dimensions). Height 275 mm	1.660 mm x 1.410 mm (internal dimensions)
G.V.W.	1.300 kg	
VEHICLE KERB WEIGHT	550 kg	625 kg
PAYLOAD	750 kg	675 kg
LOAD CAPACITY VOLUME	----	2 m <sup>3</sup>
MAX SPEED	45 km/h	
FUEL TANK CAPACITY	10, 5 l	
HOMOLOGATION STANDARD	Emissions compliance L5E-b three-wheeler, Euro 4	

## HOMOLOGATION STANDARD L5e-b Euro 4



**HOMOLOGATION STANDARD L5e-b**  
**Euro 4**

